

# ARTIFICIAL INTELLIGENCE

POSTGRADUATE DIPLOMA

A glowing square chip with the letters 'AI' in white, set against a background of blue and purple circuitry and light trails.

AI



## LEVEL 7

# Diploma in Artificial Intelligence

The ATHE Level 7 Postgraduate Extended Diploma in Computing Technologies (Artificial Intelligence) is a prestigious 120-credit Ofqual regulated qualification. This program is meticulously crafted to equip learners with essential knowledge, profound insights, and cutting-edge skills required to excel in the realm of artificial intelligence and computing technologies.

Designed in collaboration with leading subject experts, educational institutions, and industry pioneers, this diploma stands as a testament to our commitment to delivering excellence in education. It has been tailored to cater to the evolving demands of the tech industry and ensure that learners are prepared to embark on promising career trajectories or pursue advanced academic pursuits.

In today's era, marked by the rapid advancements in cloud computing, big data, and artificial intelligence, the Level 7 Postgraduate Extended Diploma in Computing Technologies (Artificial

Intelligence) emerges as a beacon of opportunity. As the world witnesses the transformative potential of AI, this diploma empowers learners to embrace the Fourth Industrial Revolution, propelling them into the forefront of innovation and technological breakthroughs.

### ***Learning Outcomes:***

The Level 7 Postgraduate Extended Diploma in Computing Technologies (Artificial Intelligence) empowers learners with a holistic skill set, encompassing technical expertise, innovation management, and research acumen. Graduates emerge proficient in developing user-centric systems and implementing robust cyber security measures. By mastering Business Intelligence Systems, learners gain insights into data-driven decision-making. The program culminates in an Independent Project, enabling students to apply their knowledge effectively. This comprehensive diploma prepares graduates to lead technological change, spearhead innovation, and make impactful contributions to the field of computing technologies, with a focus on artificial intelligence.

Managing Innovation and Change in Computing	20 Credits
Systems Development and User Experience (UX)	20 Credits
Implementing and Managing Cyber Security	20 Credits
Business Intelligence Systems	20 Credits
Independent Project	20 Credits
Artificial Intelligence	10 Credits
Computer-based Research Methods	20 Credits

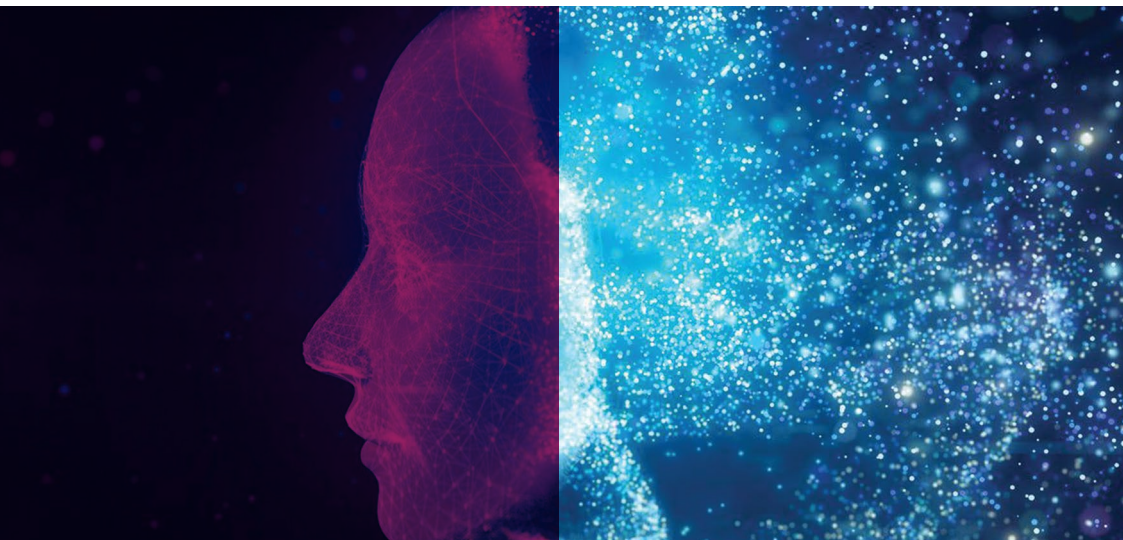
## Entry Requirements

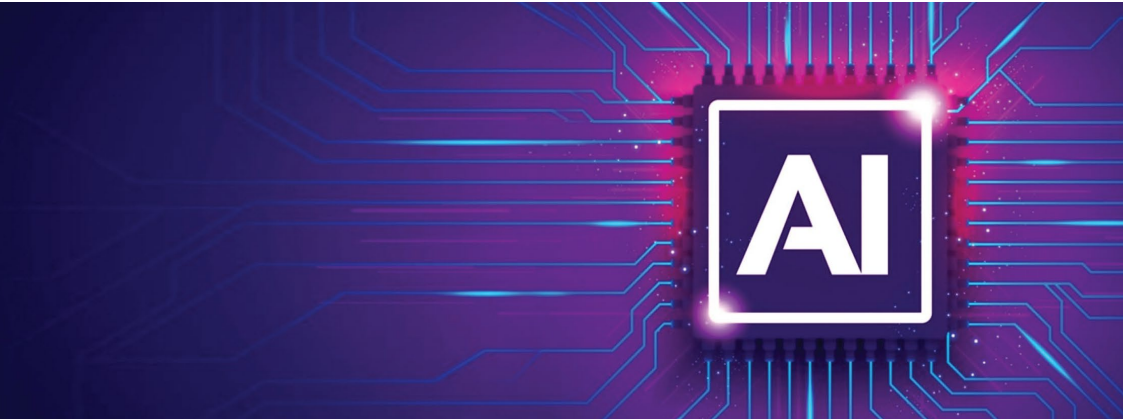
A minimum of a Level 6 qualification in a related sector or;

Bachelors degree or;

A minimum of 3 years work experience which demonstrates current and relevant industry knowledge.

The OTHM Level 7 diplomas on the Regulated Qualifications Framework (RQF) are at the same level as master's degrees. However, they are shorter (120 credits) and learners will have to proceed to the dissertation stage (60 credits) with university to achieve a full Masters programme.





### Duration

6 Months

### Class Schedule

Every Sunday

### Delivery

Online only

### Assessment Methods

Assignments & Workshops

### Entry Requirement

A minimum of a Level 6 qualification in a related sector or; Bachelors degree or;  
A minimum of 3 years work experience which demonstrates current and relevant industry knowledge.

### Investment

LKR 470,000 + Reg. Fee 10,000

### Total Qualification time

1200 hours

### Overall Grading Type

Pass/Fail

### Assessment Methods

Coursework

### Language of Assessment

English

Module exemptions may be granted based on prior qualification curriculum.

This qualification will also help you to meet the criteria required for migration purposes for countries such as Canada, Australia, and New Zealand.



ATHE is a global awarding organisation regulated by Ofqual, Qualifications in Wales and other international regulators. We provide centres with a wide variety of qualifications including, but not limited to business and management, computing, law, computing and information technology, accounting, health and social care, education and training and religious studies. The qualifications have been meticulously crafted through collaborative efforts involving expert insights from college managers, staff, training providers, businesses, subject matter experts, and the dedicated qualification development team.

Valuable input from learners has been considered, alongside consultations with higher education institutions, to ensure these qualifications seamlessly enable advancement to higher levels where relevant. Leveraging the adaptability of the RQF, a comprehensive range of awards, certificates, and Extended Diplomas has been curated, offering a seamless pathway for progression across various RQF levels and their globally recognized counterparts.

<https://athe.co.uk/>



**KENSLEY**  
GRADUATE SCHOOL

**LONDON : 2-4 COMMERCIAL STREET, LONDON, ENGLAND. E1 6LP +44(0) 208 554 4449**

**COLOMBO : NO.20, CLIFFORD AVENUE, COLOMBO 03, SRI LANKA. +94(0) 011 721 4545**

[WWW.KENSLEYGRADUATESCHOOL.COM](http://WWW.KENSLEYGRADUATESCHOOL.COM)